

Apartment

Pomer, Medulin, Istria



| | |
|-------------------------|--------------------|
| Ref | RE-U-21895 |
| Type | Apartment |
| Region | Istria > Pula |
| Location | Pomer, Medulin |
| Front line | No |
| Sea view | Yes |
| Distance to sea | 350 m |
| Floorspace | 250 sqm |
| No. of bedrooms | 7 |
| No. of bathrooms | 6 |
| Price | Price upon request |

Apartment

Pomer, Medulin, Istria



Duplex in Pomer, Medulin, with sea views only 350 meters from the sea!
Total area is 250 sq.m. Land plot is 300 sq.m.

In Pomer, a larger apartment on the first floor is currently for sale, spanning 112 m². It features an open space in the living area perfect for socializing and entertainment. The sleeping area comprises three comfortable rooms, each with its own bathroom, ensuring complete privacy for all guests. The standout feature of this apartment is the 30 m² rooftop terrace where you can enjoy a view of the sunlit sea. This place will become your favorite spot for relaxation and indulging in the charms of the beautiful coastline.

The property's location is exceptional, situated in close proximity to stunning beaches and all necessary amenities. You can quickly and easily stroll to the beach for a refreshing swim or bask in the sun. Additionally, various restaurants, shops, marinas, campsites, and other recreational facilities are nearby, providing everything you need for living or staying.

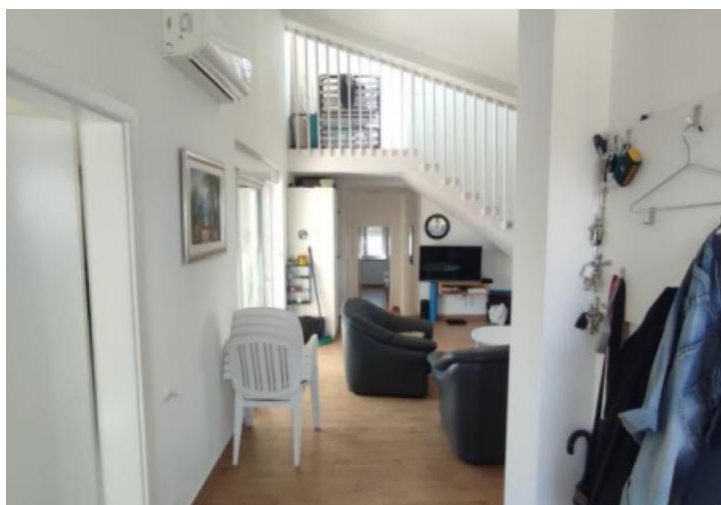
Additional information:

- The house is equipped with a solar system used for heating water.
- Sold fully furnished.
- Private parking on the property.
- Additional storage on the exterior.
- The apartment is equipped with the first phase of central heating and a chimney for wood or pellet heating.

Overall additional expenses borne by the Buyer of real estate in Croatia are around 7% of property cost in total, which includes: property transfer tax (3% of property value), agency/brokerage commission (3%+VAT on commission), advocate fee (cca 1%), notary fee, court registration fee and official certified translation expenses. Agency/brokerage agreement is signed prior to visiting properties.

Apartment

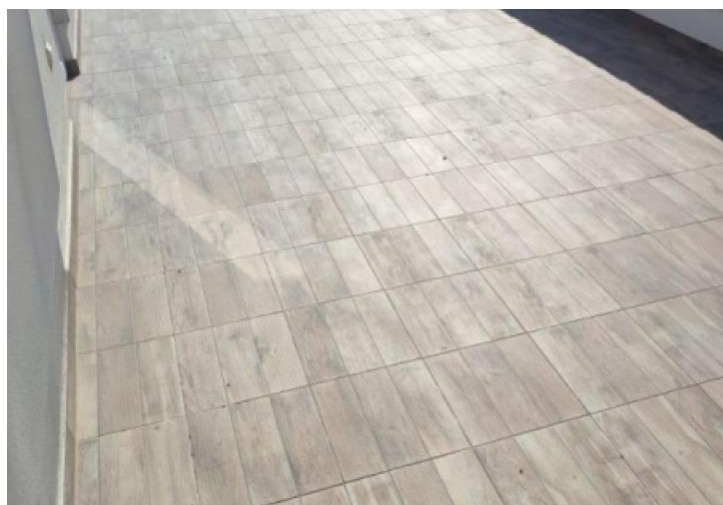
Pomer, Medulin, Istria



Tel: +385 91 357 3071 Viber, Whatsapp
adrionikainfo@gmail.com
www.adrionika.com

Apartment

Pomer, Medulin, Istria



| opis: | | |
|---------------------------|------------|----|
| posljednja | posljednja | 12 |
| stor | 3.04 | |
| posljednja, plav, kuhinja | 30.01 | |
| plav | 6.75 | |
| ca 1 | 11.47 | |
| ca 2 | 4.03 | |
| ca 3 | 13.70 | |
| ca 4 | 4.80 | |
| ca 5 | 11.47 | |
| ca 6 | 4.03 | |
| ca 7 | 13.70 | |
| ca 8 | 4.80 | |
| ca 9 | 11.47 | |
| ca 10 | 4.03 | |
| ca 11 | 13.70 | |
| ca 12 | 4.80 | |
| ca 13 | 11.47 | |
| ca 14 | 4.03 | |
| ca 15 | 13.70 | |
| ca 16 | 4.80 | |
| ca 17 | 11.47 | |
| ca 18 | 4.03 | |
| ca 19 | 13.70 | |
| ca 20 | 4.80 | |
| ca 21 | 11.47 | |
| ca 22 | 4.03 | |
| ca 23 | 13.70 | |
| ca 24 | 4.80 | |
| ca 25 | 11.47 | |
| ca 26 | 4.03 | |
| ca 27 | 13.70 | |
| ca 28 | 4.80 | |
| ca 29 | 11.47 | |
| ca 30 | 4.03 | |
| ca 31 | 13.70 | |
| ca 32 | 4.80 | |
| ca 33 | 11.47 | |
| ca 34 | 4.03 | |
| ca 35 | 13.70 | |
| ca 36 | 4.80 | |
| ca 37 | 11.47 | |
| ca 38 | 4.03 | |
| ca 39 | 13.70 | |
| ca 40 | 4.80 | |
| ca 41 | 11.47 | |
| ca 42 | 4.03 | |
| ca 43 | 13.70 | |
| ca 44 | 4.80 | |
| ca 45 | 11.47 | |
| ca 46 | 4.03 | |
| ca 47 | 13.70 | |
| ca 48 | 4.80 | |
| ca 49 | 11.47 | |
| ca 50 | 4.03 | |
| ca 51 | 13.70 | |
| ca 52 | 4.80 | |
| ca 53 | 11.47 | |
| ca 54 | 4.03 | |
| ca 55 | 13.70 | |
| ca 56 | 4.80 | |
| ca 57 | 11.47 | |
| ca 58 | 4.03 | |
| ca 59 | 13.70 | |
| ca 60 | 4.80 | |
| ca 61 | 11.47 | |
| ca 62 | 4.03 | |
| ca 63 | 13.70 | |
| ca 64 | 4.80 | |
| ca 65 | 11.47 | |
| ca 66 | 4.03 | |
| ca 67 | 13.70 | |
| ca 68 | 4.80 | |
| ca 69 | 11.47 | |
| ca 70 | 4.03 | |
| ca 71 | 13.70 | |
| ca 72 | 4.80 | |
| ca 73 | 11.47 | |
| ca 74 | 4.03 | |
| ca 75 | 13.70 | |
| ca 76 | 4.80 | |
| ca 77 | 11.47 | |
| ca 78 | 4.03 | |
| ca 79 | 13.70 | |
| ca 80 | 4.80 | |
| ca 81 | 11.47 | |
| ca 82 | 4.03 | |
| ca 83 | 13.70 | |
| ca 84 | 4.80 | |
| ca 85 | 11.47 | |
| ca 86 | 4.03 | |
| ca 87 | 13.70 | |
| ca 88 | 4.80 | |
| ca 89 | 11.47 | |
| ca 90 | 4.03 | |
| ca 91 | 13.70 | |
| ca 92 | 4.80 | |
| ca 93 | 11.47 | |
| ca 94 | 4.03 | |
| ca 95 | 13.70 | |
| ca 96 | 4.80 | |
| ca 97 | 11.47 | |
| ca 98 | 4.03 | |
| ca 99 | 13.70 | |
| ca 100 | 4.80 | |

