

# Apartment

## Starigrad, Dalmatia



<b>Ref</b>	RE-TR-4580
<b>Type</b>	Apartment
<b>Region</b>	Dalmatia › Island Hvar
<b>Location</b>	Starigrad
<b>Front line</b>	No
<b>Sea view</b>	No
<b>Floorspace</b>	80 sqm
<b>Plot size</b>	33 sqm
<b>No. of bedrooms</b>	2
<b>No. of bathrooms</b>	2
<b>Price</b>	€ 240 000



# Apartment

## Starigrad, Dalmatia



New two-bedroom apartment for sale in Starigrad on Hvar island!

Ground floor apartment of 80 sq.m. plus garden of 33 sq.m. and parking.

Apartment is a duplex:

Lower level is salon with kitchen area and dining zone, bathroom and loggia with garden.

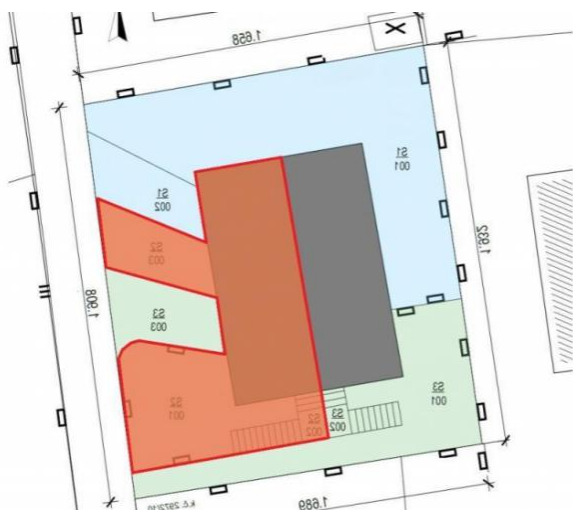
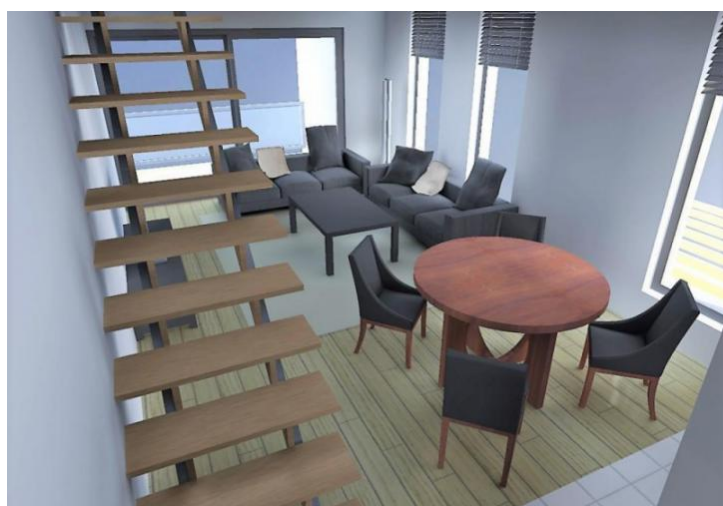
Upper level is a hall, two bedrooms and bathroom.

Overall additional expenses borne by the Buyer of real estate in Croatia are around 7% of property cost in total, which includes: property transfer tax (3% of property value), agency/brokerage commission (3%+VAT on commission), advocate fee (cca 1%), notary fee, court registration fee and official certified translation expenses. Agency/brokerage agreement is signed prior to visiting properties.



# Apartment

## Starigrad, Dalmatia



ISKAZ NETO KORISNIH POVRŠINA - 1. KAT					
STAN	OZNAKA	PROSTORIJA	VISINA PROSTORIJE (cm)	POVRŠINA (m <sup>2</sup> )	REDU. POV. (m <sup>2</sup> )
S2	110	Loggia	255	1,00	0,75
	120	Kupaona	255	4,47	4,47
	130	Dne. bor., kuh. i blagovaona	255	23,17	23,17
	131	Ispod stepa: 0,30-1,00 m	255	0,77	0,30
	132	Ispod stepa: 1,00-2,00 m	255	1,13	0,75
	133	Ispod stepa: 2,00-2,40 m	255	0,41	0,90
	134	Ispod stepa: 2,40-5,00 m	255	0,51	1,00
	140	Loggia	255	6,18	0,75
				37,64 m <sup>2</sup>	34,98 m <sup>2</sup>

Tel: +385 91 357 3071 Viber, Whatsapp  
 adrionikainfo@gmail.com  
 www.adrionika.com



# Apartment

## Starigrad, Dalmatia



### ISKAZ NETO KORISNIH POVRŠINA - POTKROVLJE

STAN	OZNAKA	PROSTORIJA	VISINA PROSTORIJE (cm)	POVRŠINA (m2)	KOEF. REDUK.	REDU. POV. (m2)
S2	212	Hodnik 2.00-2.40 m	240	1.24	0.90	1.11
	213	Hodnik 2.40-5.00 m	303	5.53	1.00	5.53
	221	Soba 1.00-2.00 m	200	1.04	0.75	0.78
	221	Soba 1.00-2.00 m	200	3.43	0.75	2.58
	222	Soba 2.00-2.40 m	240	5.34	0.90	4.81
	223	Soba 2.40-5.00 m	303	4.79	1.00	4.79
	231	Kupatona 1.00-2.00 m	200	0.55	0.75	0.41
	231	Kupatona 1.00-2.00 m	200	0.96	0.75	0.72
	232	Kupatona 2.00-2.40 m	240	3.08	0.90	2.78
	241	Soba 1.00-2.00 m	200	4.62	0.75	3.47
	242	Soba 2.00-2.40 m	240	2.71	0.90	2.44
	243	Soba 2.40-5.00 m	303	4.72	1.00	4.72
				<b>38.01 m²</b>		<b>34.14 m²</b>